

Objectives and challenges

Improve monitoring of vegetation, rangeland quality, agricultural yield estimation, burned area, water resources and coastline (erosion), soil degradation; infrastructure, settlements and marine.

Ousmane BOCOUM



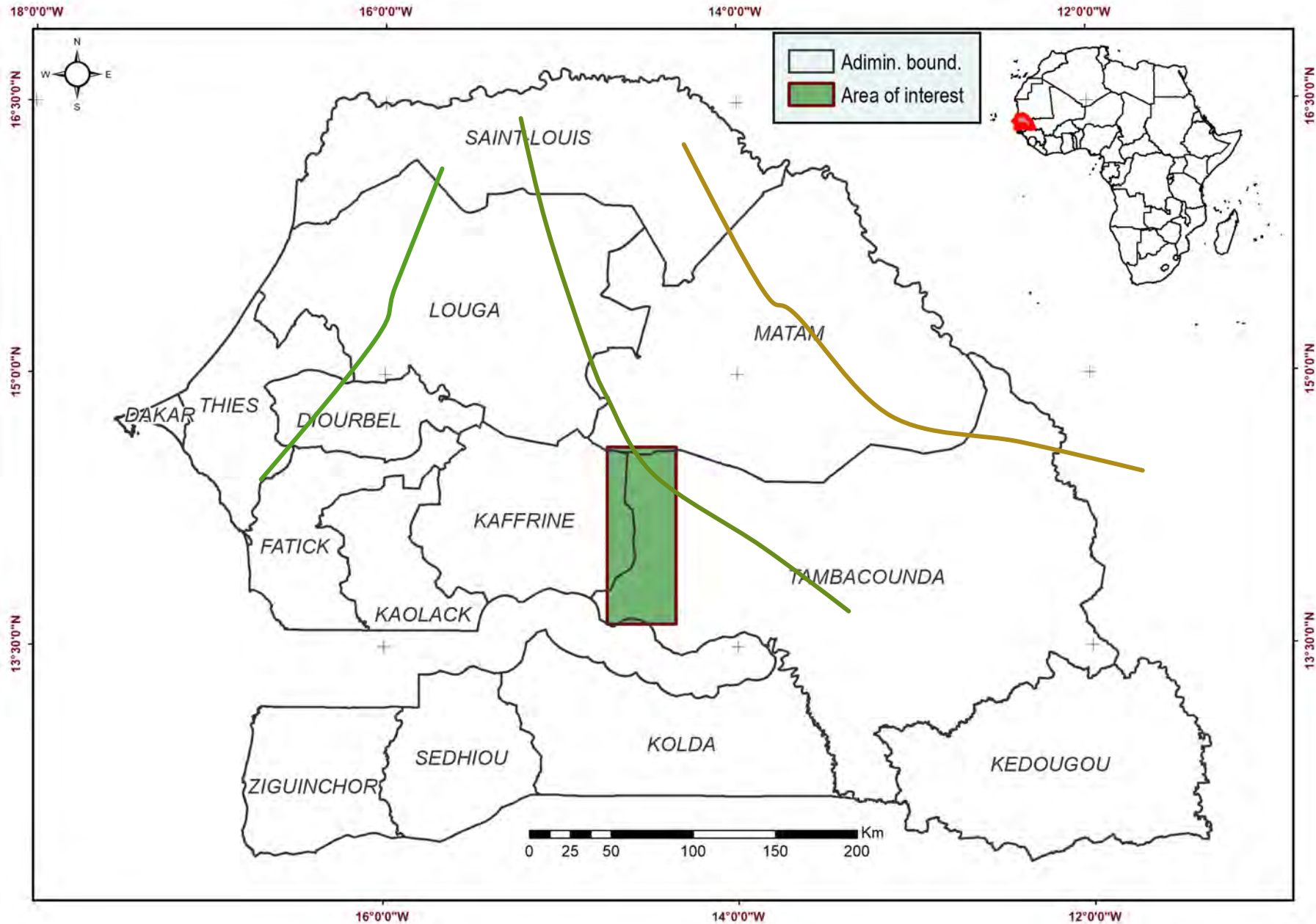
Centre de Suivi Ecologique

Cheikh FAYE



10 ANS | 2008-2018
Initiative Prospective Agricole et Rurale

Location map

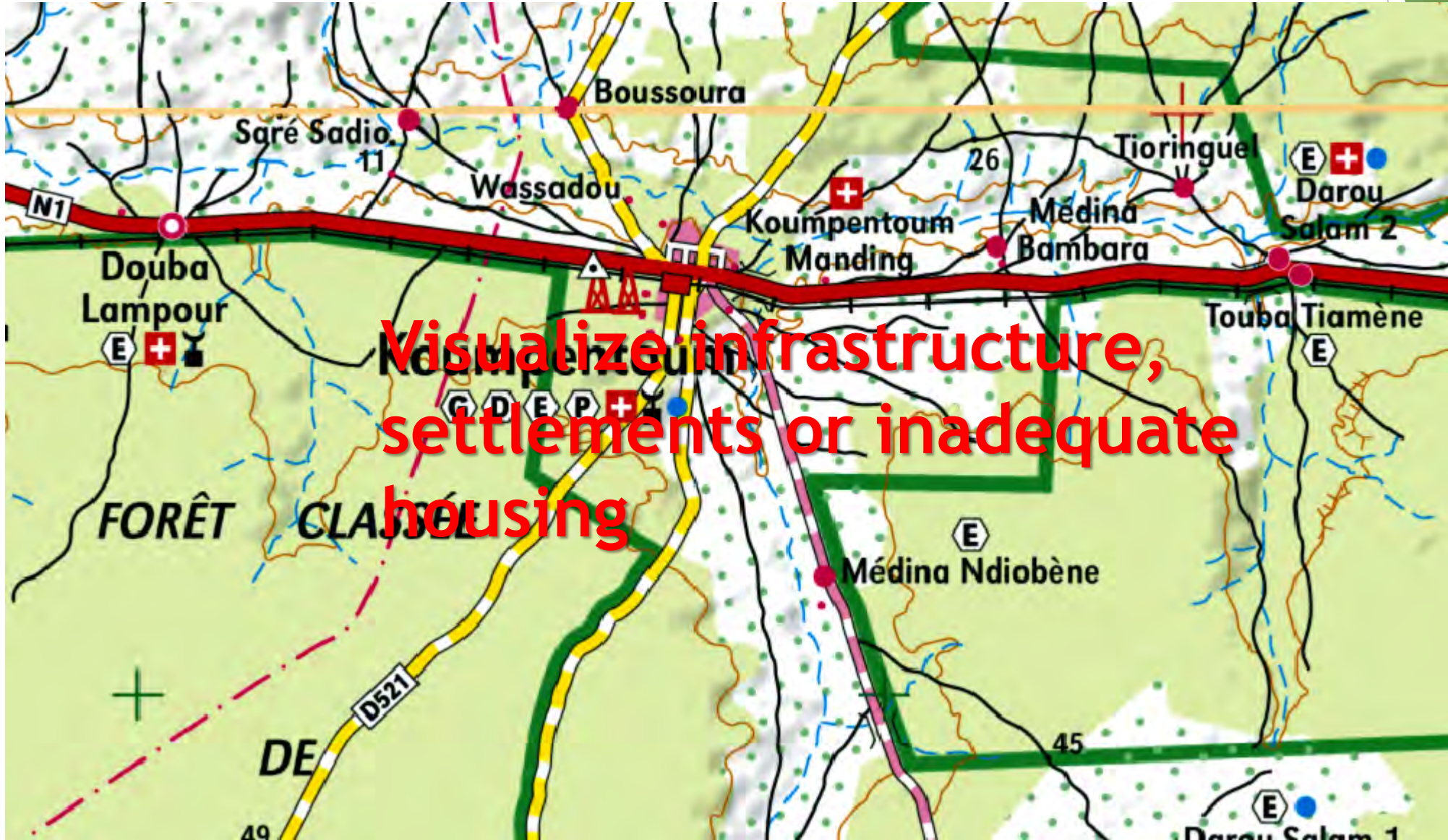


pastoralism

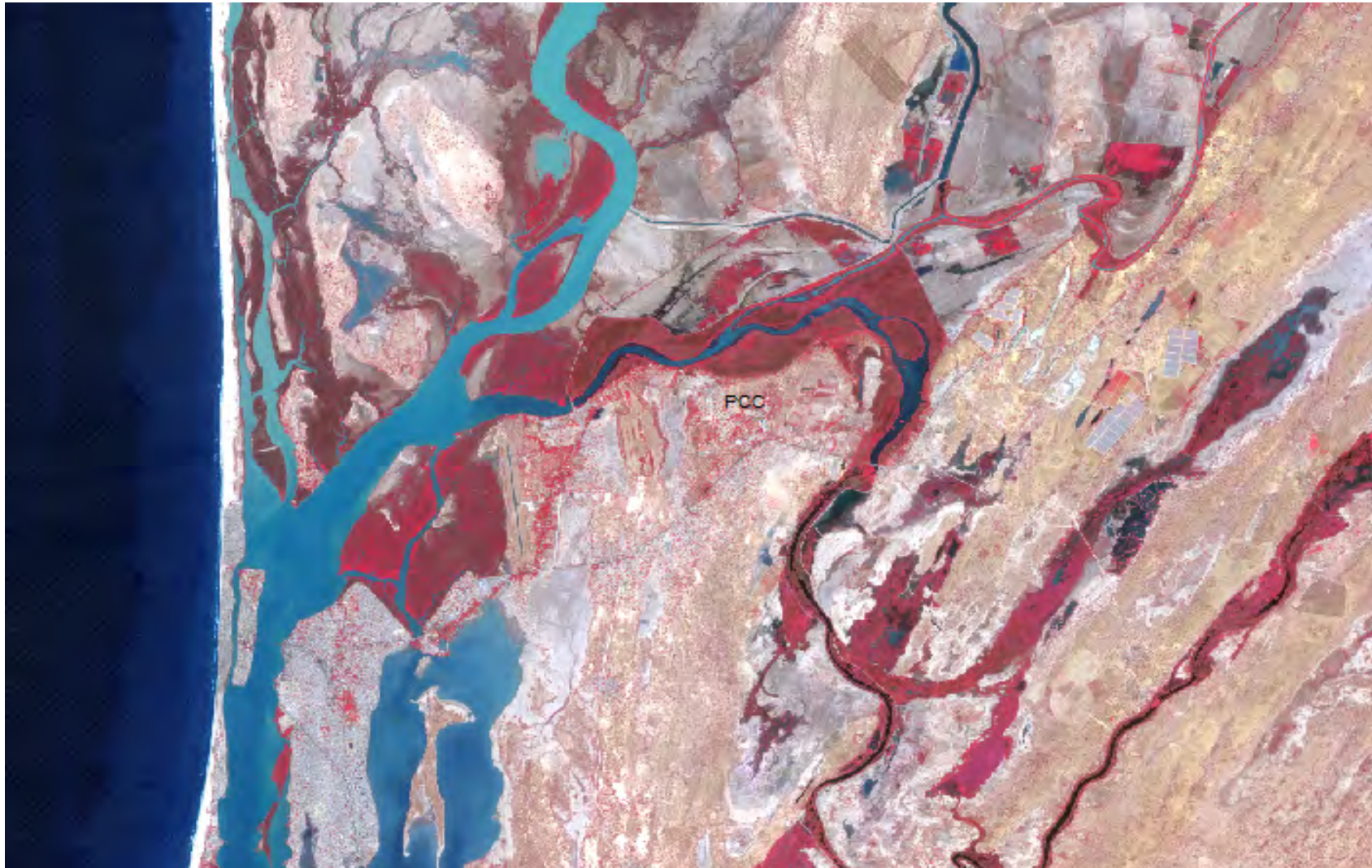
- **Monitor surface water (quality and volume);**
- **Sea (elevation, temperature, nutrients...)**
- **Rangeland quality and quantity**

- 
- An aerial satellite image of a savanna landscape, showing a mix of green vegetation and brownish-tan areas, likely representing different types of vegetation cover and burned areas. The image is overlaid with a semi-transparent green box containing two bullet points in red text. The background of the slide features a green geometric pattern on the right side.
- Improve monitoring of vegetation cover (distinguish between savannahs and forests and biodiversity)
 - Refine the estimate of areas burned

Update mapping (scale, data accuracy)



- Changes in the coastline (erosion)
- Better estimate agricultural production
- Degradation of the soil



SDG (2, 6, 9 and 11)

Proportion of:

- ▶ 2.4.1 Agricultural area under productive and sustainable agriculture
- ▶ 6.5.2 Transboundary basin area with an operational arrangement for water cooperation
- ▶ 6.6.1 Change in the extent of water-related ecosystems over time
- ▶ 9.1.1 The rural population who live within 2 km of an all-season road
- ▶ 11.1.1 Urban population living in slums, informal settlements or inadequate housing
- ▶ 11.7.1 Average share of the built-up area of cities that is open space for public use for all, by sex, age and persons with disabilities

SDG (14 to 15)

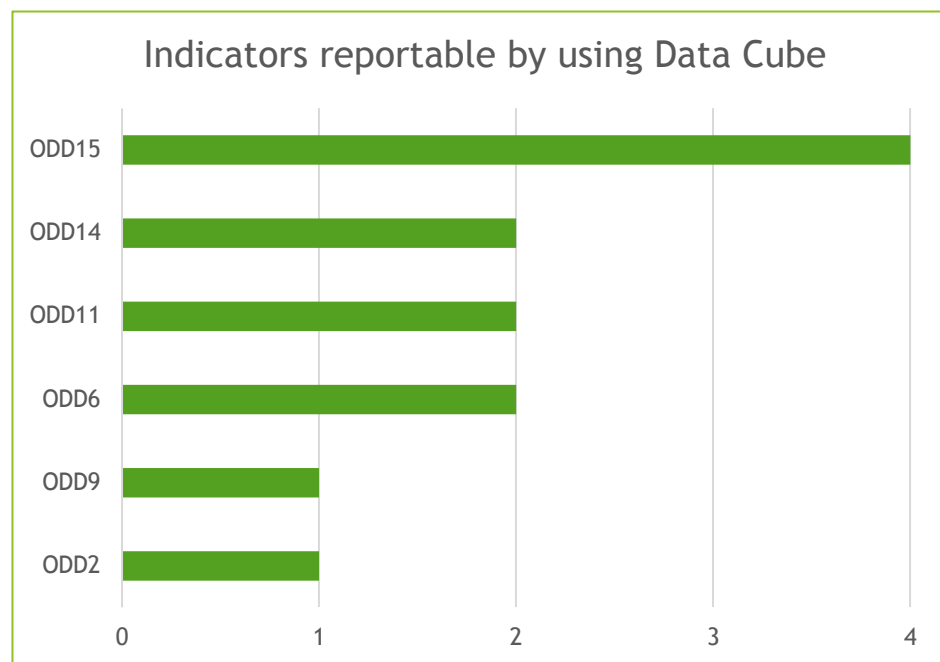
Proportion of:

- ▶ 14.2.1 National exclusive economic zones managed using ecosystem-based approaches
- ▶ 14.5.1 Coverage of protected areas in relation to marine areas
- ▶ 15.1.1 Forest area as a total land area
- ▶ 15.1.2 Important sites for terrestrial and freshwater biodiversity that are covered by protected areas, by ecosystem type
- ▶ 15.3.1 Land that is degraded over total land area

Gouvernement and national policy

- National bodies concerned
- The Statistics Directorate (agriculture, livestock, housing...)
- Ministry of the Environment (biodiversity, air quality, forest monitoring...)

Tier classification for SDG indicators enquired by data cube



| | | | | | | Tier I |
|-------|-------|-------|--------|--------|--------|----------|
| | | | | | | Tier III |
| | | | | | | Tier III |
| ODD2 | ODD6 | ODD9 | ODD11 | ODD14 | ODD15 | |
| 2.4.1 | 6.5.2 | 9.1.1 | 11.1.1 | 14.2.1 | 15.1.1 | |
| | 6.6.1 | | 11.7.1 | 14.5.1 | 15.1.2 | |
| | | | | | 15.3.1 | |
| | | | | | 15.4.1 | |



Thank you